

eGo® Plus Micro-Mini Windshield Sticker Tag

Installation Instructions

16-0074-001 Rev A 7/16

Required supplies

- eGo Plus Micro-Mini Windshield Sticker Tag
- Commercial glass cleaner and paper towels

General instructions and guidelines

- If you think your vehicle may have a metallized windshield, contact the customer service center.
- You **MUST** correctly and permanently install the tag on the windshield before driving to the toll plaza. Do not attach the tag to your visor or other temporary location.
- Do not wave the tag or hold it inside or outside your vehicle as you approach the toll plaza.

Choose a location for your tag

Determine where you will position the tag. **Figure 1** shows the zone where your tag should be located for optimal performance.

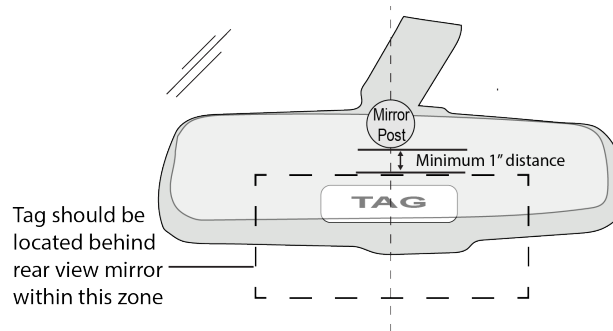


Figure 1 – Tag Location for Optimal Performance

Mirror mounted to Header

Measure down approximately 4" from the top of the interior windshield and center the tag on the windshield behind the rear view mirror.

Mirror mounted to windshield

Locate the tag approximately 1" below the rear view mirror mount.

Large Truck without a rear view mirror

If the truck does not have a center bar, the tag should be centered 3" from the bottom of the windshield. If the truck has a center bar, position the tag 2" to the right of the center bar (looking from the inside of the vehicle), and 2" from the bottom of the windshield. (Figure 2).

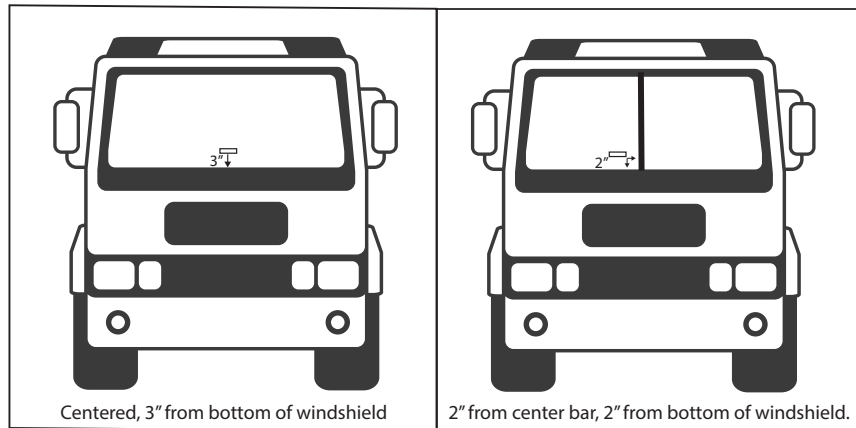


Figure 2 – Tag Location for Large Trucks

Install your tag

Install the tag when the windshield's temperature is above 50°F (10°C). In colder climates, use your heater/ defroster to warm the windshield before installing the tag.

Note: Once the tag is installed, it cannot be repositioned or moved.

1. Clean and dry the area where the tag will be installed with commercial glass cleaner and paper towels.
2. Hold the tag so that the release liner is facing you. Locate the release tab on the upper right corner of the tag (Figure 3). Work the tab back and forth a few times to loosen it. Slightly pull the tab and bend it toward you to detach the tab, peel the release liner, and expose the adhesive.

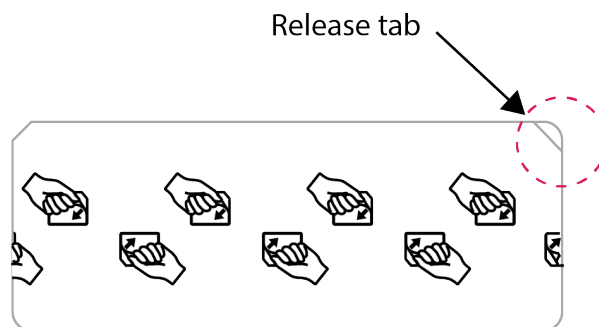


Figure 3 – Location of Release Tab

Note: This tag features a double release liner. When the release liner is removed, the surface of the tag should feel sticky. Before installing the tag, be sure that the release liner is completely removed and that the adhesive is exposed.

- With the adhesive side facing the windshield, move the tag to the desired location, and then press one edge to the glass.
- Adhere the tag to the glass by rubbing your thumb up and down in a zigzag motion across the entire tag surface (Figure 4). Be sure to rub over the tag's chip to remove as much air as possible.

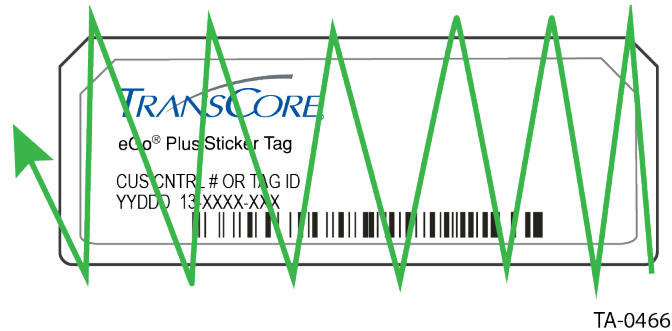


Figure 4 – Remove Air From Around Tag Chip

- Step outside of your vehicle and look at the tag through the windshield. There should be minimal air around the ASIC chip. If there is air around the chip, rub the tag again as shown in Figure 4. Figure 5 shows examples of correctly installed tags.

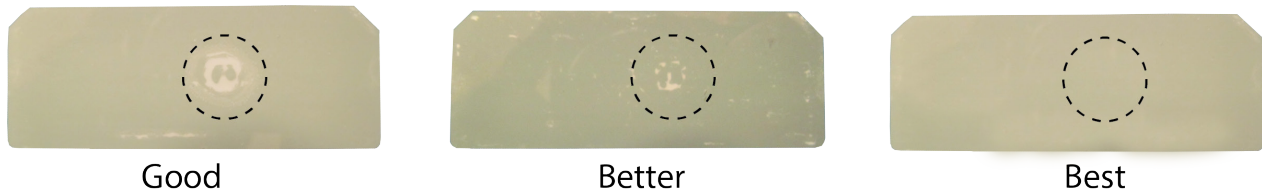


Figure 5 – Examples of Properly Installed Tags

- Your tag is installed and ready for use.

Remove the tag

If you need to remove the tag from your windshield, peel off the tag starting at one corner, then clean any adhesive residue remaining on the windshield using isopropyl alcohol. Discard the used tag.

Note: *Once you remove the tag, you cannot reuse it.*



For more information:

Sales Support
800.923.4824

Technical Support
505.856.8007

transcore.com



© 2016 TransCore LP. All rights reserved. TRANSCORE is a registered trademark and is used under license. All other trademarks listed are the property of their respective owners. Contents subject to change. Printed in the U.S.A.

16-0074-001 Rev A

