

## Quick Start Instructions for the AP4119 Rail Tag Programmer

1. Plug in round power plug from transformer (Figure 1). Plug one end of the power cord into transformer and the other end into a standard AC outlet.
2. Plug in the serial cable to the RS-232 port or the USB cable to the USB port. Connect the other end to computer.



**Caution:** Use only the serial cable supplied with the AP4119 programmer. If you use the cable and null-modem adapter from an AP4110 Tag Programmer, the AP4119 will not communicate.

3. Switch on power. The POWER LED lights green and stays lit as long as tag programmer is powered up.

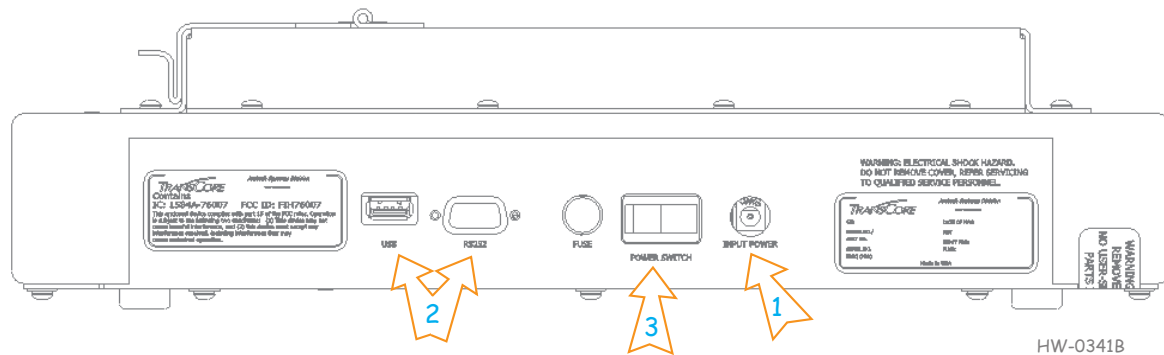


Figure 1

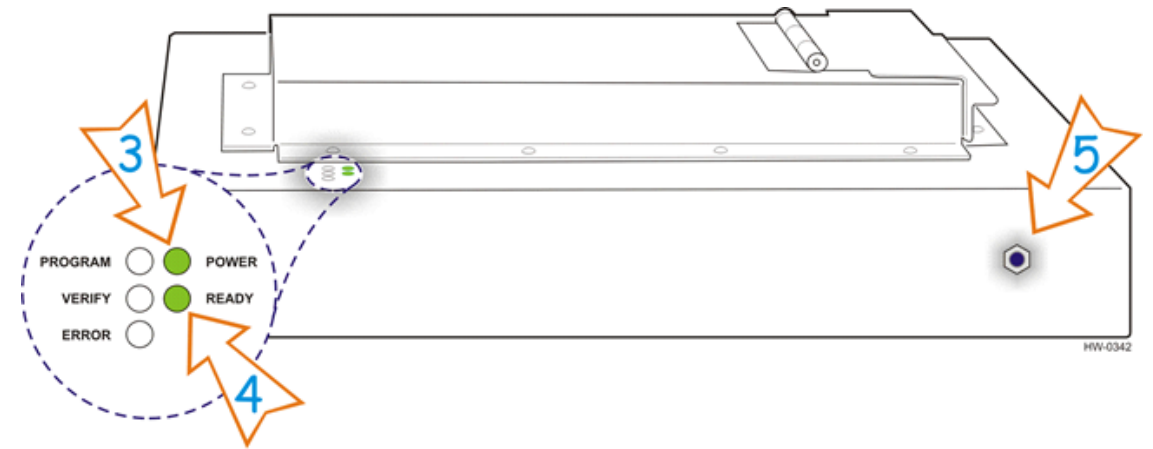


Figure 2

4. After about 2 seconds, the READY LED illuminates green and stays lit (Figure 2). The programmer is ready for operation.
5. Plug in banana connector for anti-static wrist strap. Always wear wrist strap when programming tags. Refer to the AP4119 Rail Tag Programmer User Guide for more anti-static protection information.
6. Launch your programming application or use the AP4119 Tag Programmer Host Software on the provided USB flash drive.