

# TransSuite

## Data Portal

TransSuite® Data Portal is an interactive web-based tool that allows users to structure detector queries to extract data as quantifiable results. Queries can be easily created, edited, copied, deleted and searched from the main page.

Data Portal is a module in the family of TransSuite transportation management software products, and offers a fully PC-based hardware architecture and a Windows® graphical user-interface along with TransCore's best-in-class graphical display tools.

## TransSuite Event Viewer

The TransSuite Event Viewer is a web-based tool that allows users to query and obtain reports for historical events that have been entered into the TransSuite Event Manager. Users can apply filters to criteria such as location, severity and type to narrow the scope of events. Relevant data can be viewed by event name online or downloaded as an Excel document.

### Event Viewer Features:

- ▶ Access to an event's Incident Detail Report
- ▶ Download, present event data in Excel or Access
- ▶ Event Map of incident location
- ▶ Graphic Summary of incidents blockage duration
- ▶ Corridor Report: # of events and lane closures

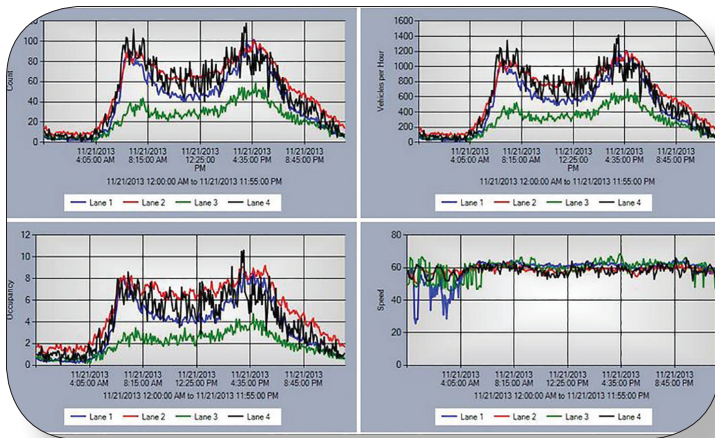
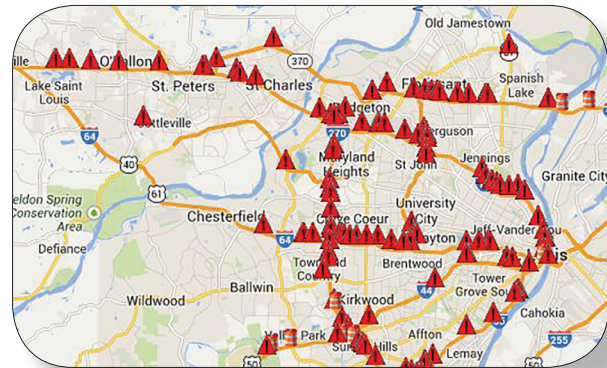
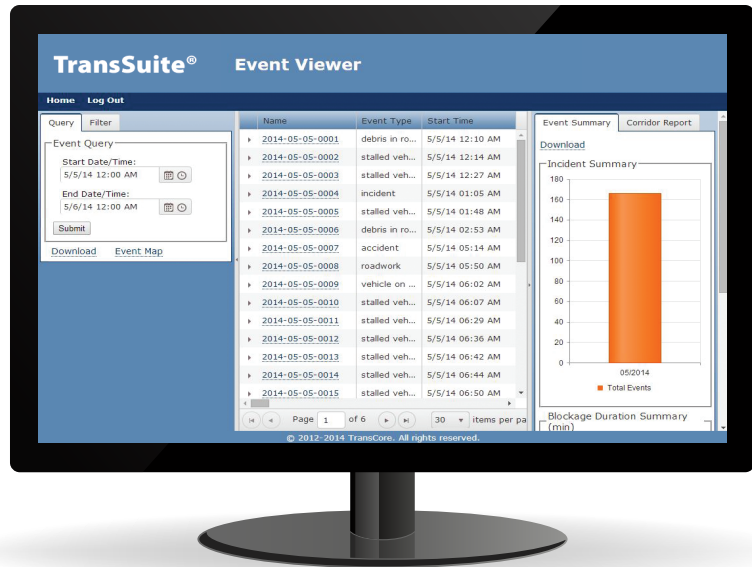


## TransSuite Traffic Dashboard

This web-based tool allows users to access historical data within the system, and review traffic conditions and incidents within a user-defined timeframe. Using this tool, an operator can review traffic conditions that occurred before, during and after an incident, and then respond accordingly to prevent or minimize future incidents. TransSuite's emphasis on standards enables our customers to maximize compatibility with their existing workstation and server components.

# Detector Aggregation and Reporting Features

- ▶ User-friendly interface
- ▶ Execute or schedule queries in real time
- ▶ Aggregates raw 30-second data
- ▶ Reports on volume, speed, occupancy and data quality
- ▶ Reports on max speed, average speed and speed index
- ▶ Downloadable Google Earth map of congestion
- ▶ Summary/graph of volume, speed and occupancy
- ▶ Reports read in Excel, Access and TRADAS
- ▶ Define, store and edit for future use
- ▶ User-defined query viewable rights



**For more information:**

**Call**  
770.246.6202

**Fax**  
770.449.7268

**Email**  
ITS@TransCore.com

 **Follow Us**

[transcore.com](http://transcore.com)