

AA3233-005

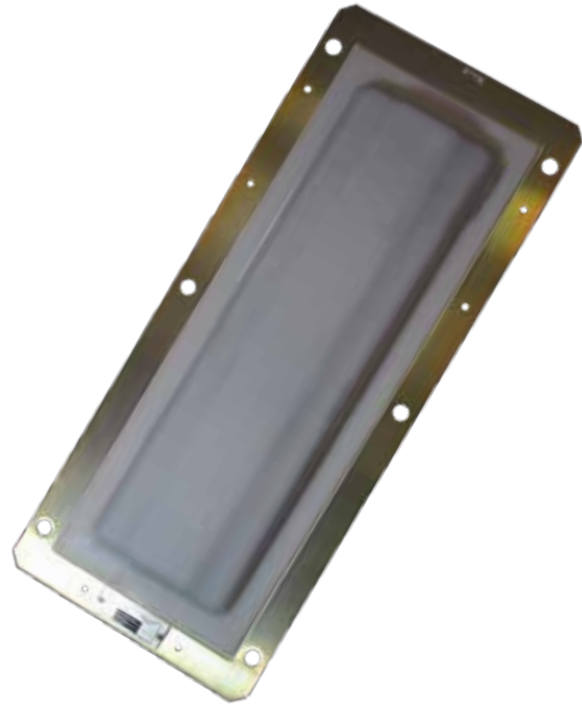
On-Board Heavy Rail Antenna

TransCore's AA3233-005 Heavy Rail Antenna is a rugged, reliable 915 MHz antenna specifically designed for mounting to train undercarriages.

Constructed for high shock and vibration environments, the IP65/68 rugged weatherproof enclosure provides protection from harsh environmental conditions encountered in railroad applications.

When paired with TransCore's AT5000-series transportation tags, the AA3233-005 Heavy Rail Antenna can read rail transponders at speeds up to 75 mph (120 km/h).

The AA3233-005 includes a strain relief kit to provide better coaxial cable durability when used in bogie mount applications.



Features

- ▶ Constructed for high shock and vibration environments
- ▶ IP65/68 rugged weatherproof enclosure
- ▶ Corrosion and chemical resistant
- ▶ Strain relief kit for high vibration applications

Applications

- ▶ Train positioning
- ▶ Rail Automatic Equipment Identification (AEI)

AA3233-005 On-Board Heavy Rail Antenna

COMMUNICATIONS

Frequency Range

902 to 928 MHz

Gain (peak, near field)

10 dBi

Polarization

Linear, parallel with longer side

VSWR

<2.0:1

Impedance

50 ohms nominal

Beamwidth

E-Plane: 33°

H-Plane: 80°

HARDWARE FEATURES

Connectors

Right angle N-type female

PHYSICAL

Dimensions

Size: 68.2 x 28.6 x 8.7 cm (26.9 x 11.3 x 3.4 in)

Weight: 7.64 kg (16.4 lbs)

Enclosure

IP65/68 at 1.1 m for 60 minutes

ENVIRONMENTAL

Operating Air Temperature

-40°C to 80°C (-40°F to +176°F)

Humidity

EN60068-2-30 Variant 1

Vibration Tolerance

AREMA Part 11.5.1 Class G & H

EN 61373:2010 Category 1B & 2

4 G_{RMS} 5 to 500 Hz

Shock Tolerance

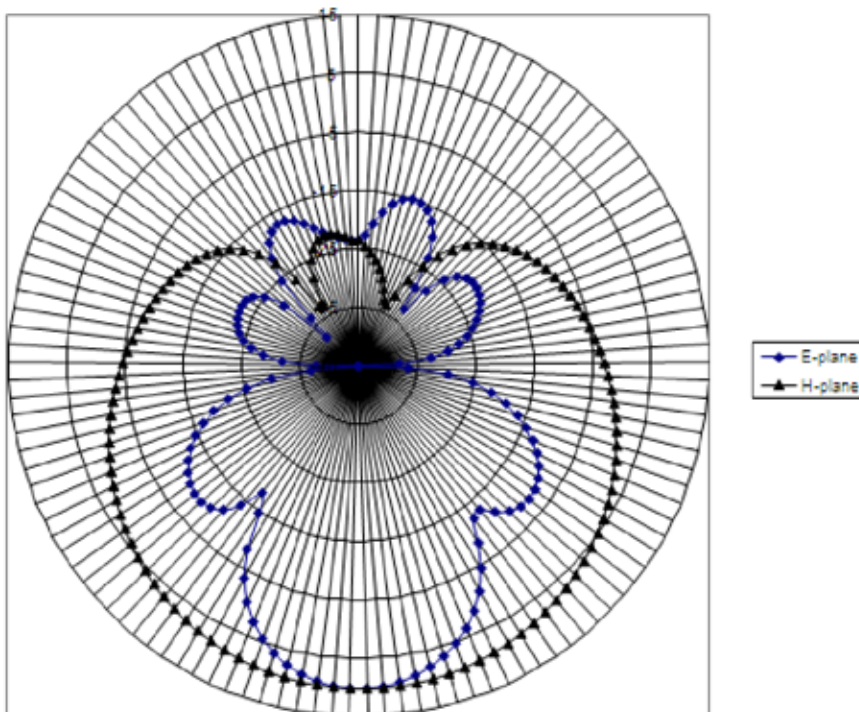
AREMA Part 11.5.1 Class G & H

EN 61373:2010 Category 1B & 2

30 G peak x 18 ms

MODEL PART NUMBERS

12-3233-005 On-Board Heavy Rail Antenna



Antenna Field Pattern

For more information:

Sales Support

800.923.4824

Technical Support

505.856.8007

transcore.com

