

TDM Transponder

J1 and J1S Switchable

TransCore's Switchable TDM Transponder is a 915-MHz battery-powered radio frequency identification (RFID) transponder that offers the flexibility of switching between two selectable configurations. It is ideal for high-speed, high-reliability applications.

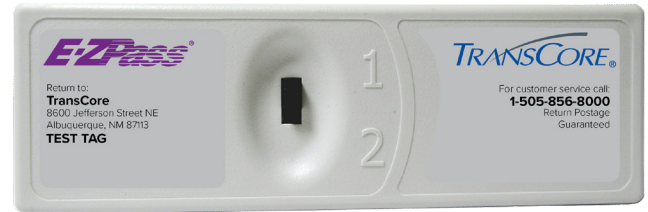
The Switchable TDM Transponder is available in two models. The J1 Switchable TDM Transponder works for basic IAG operations. The J1S Switchable TDM Transponder adds SeGo authentication for each toll transaction.

The Switchable TDM Transponder is constructed of highly durable, impact resistant, molded plastic. The non-replaceable internal battery provides years of maintenance-free service.

The Switchable TDM Transponder is designed for mounting to a vehicle's interior windshield with hook-and-loop strips for easy installation and removal.

The two-position switch can be configured to identify different tolling configurations as determined by the issuing agency.

Other customizable options include printing on the case, molded insert on the front of the case, a choice of case colors, and laser-etching.



Features

- ▶ High-speed, high-performance reading and writing
- ▶ Non-replaceable internal battery with a 10-year design life
- ▶ Mounts to interior windshield with hook-and-loop strips
- ▶ Impact resistant, molded plastic case available in six colors: blue, white, yellow, green, orange, and gray
- ▶ Two-position switch, configurable by the issuing agency
- ▶ Custom printing available on front and back of case

Applications

- ▶ Electronic Toll Collection
- ▶ Traffic Management
- ▶ HOV/HOT

Switchable TDM Transponder

COMMUNICATIONS

Transmit Frequency Range
915 MHz (nominal center)

Trigger/Receive Frequency
915.75 MHz (nominal center)

Polarization
Linear, horizontal

SOFTWARE FEATURES

Data Memory
256 bits

Data Rate
500 kb/s Manchester

Data Format
Manchester keyed carrier

Error Checking
16-bit cyclic redundancy check (CRC)

POWER

Power Source
Internal lithium battery

LIFE EXPECTANCY

Service Life
10-year design life

PHYSICAL CHARACTERISTICS

Weight
1.75 oz. (49.61 g)

Dimensions
4.35 x 1.42 x 0.56 in (11.05 x 3.61 x 0.42 cm)

Color
Six colors: white, blue, orange, yellow, green, and gray

Case
Plastic cases are UV stable and are not affected by temperature extremes or severe conditions typical of this operating environment. Shock and vibration resistant.

Mounting Surface
Interior: Non-metallic windshield

Mounting Method
Hook-and-loop strips

ENVIRONMENTAL

Operating Temperature
-40°F to +185°F (-40°C to +85°C)

Humidity
100% condensing

REGULATORY

Complies with Part 15 of the FCC rules

COMPATIBILITY

TDM

MODEL PART NUMBERS

13-7801-NNN J1-Flex
13-7811-NNN J1S-Flex

For more information:

Sales Support
800.923.4824

Technical Support
505.856.8007

transcore.com

© 2020 -2021 TransCore LP. All rights reserved. TRANSCORE is a registered trademark and is used under license. All other trademarks listed are the property of their respective owners. Contents are subject to change.

16-0174-001 Rev B 5/2021

TRANSCORE
Trusted Transportation Solutions