

J2 Switchable

TDM Transponder

TransCore's J2 Switchable TDM Transponder is a 915-MHz battery-powered radio frequency identification (RFID) transponder that offers the flexibility of switching between two selectable configurations. It is ideal for high-speed, high-reliability applications.

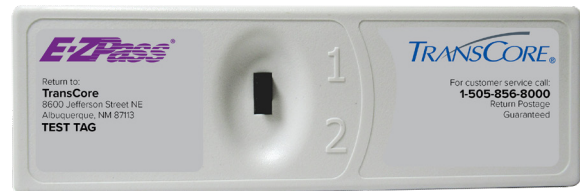
The two-position switch can be configured to identify different tolling configurations as determined by the issuing agency. An audio indicator beeps when the switch is moved from position 1 to position 2.

The J2 Switchable works for basic IAG operations and includes the capability to detect and prevent transponder tampering, cloning, and spoofing.

The J2 Switchable TDM Transponder is constructed of highly durable, impact resistant, molded plastic. The non-replaceable internal battery provides years of maintenance-free service.

The J2 Switchable TDM Transponder is designed for mounting to a vehicle's interior windshield with suction cups or hook-and-loop fastener strips for easy installation and removal.

Other customizable options include printing on the case, molded insert on the front of the case, a choice of case colors, and laser-etching.



Features

- ▶ High-speed, high-performance reading and writing
- ▶ Capability to detect and prevent transponder tampering, cloning, and spoofing
- ▶ Two-position switch with audio indicator, configurable by the issuing agency
- ▶ Non-replaceable internal battery with a 7.5-year design life
- ▶ Mounts to interior windshield with suction cups or hook-and-loop fastener strips
- ▶ Impact resistant, molded plastic case available in six colors: blue, white, yellow, green, orange, and gray
- ▶ Custom printing available on front and back of case

Applications

- ▶ Electronic Toll Collection
- ▶ Traffic Management
- ▶ HOV/HOT

J2 Switchable TDM Transponder

COMMUNICATIONS

Transmit Frequency Range

915 MHz (nominal center)

Trigger/Receive Frequency

915.75 MHz (nominal center)

Polarization

Linear, horizontal

SOFTWARE FEATURES

Data Memory

256 bits

IAG-TDM

Data Rate

500 kb/s Manchester

Data Format

Manchester keyed carrier

Error Checking

16-bit cyclic redundancy check (CRC)

POWER

Power Source

Internal lithium battery

LIFE EXPECTANCY

Service Life

7.5-year design life

PHYSICAL CHARACTERISTICS

Weight

1.75 oz. (49.61 g)

Dimensions

4.35 x 1.42 x 0.56 in (11.05 x 3.61 x 0.42 cm)

Color

Six colors: white, blue, orange, yellow, green, and gray

Case

Plastic cases are UV stable and are not affected by temperature extremes or severe conditions typical of this operating environment. Shock and vibration resistant

Mounting Surface

Interior: Non-metallic windshield

Audio Indicator

An audio indicator beeps when the switch is moved from position 1 to position 2.

Mounting Method

Suction cups or hook-and-loop fastener strips

ENVIRONMENTAL

Operating Temperature

-40°F to +185°F (-40°C to +85°C)

Humidity

100% condensing

REGULATORY

Complies with Part 15 of the FCC rules

FCC ID: FIH051132B

IC ID: 1584A-FIH051132B

COMPATIBILITY

TDM

MODEL PART NUMBERS

13-7821-NNN

⚠ WARNING

- **INGESTION HAZARD:** This product contains a button cell or coin battery.
- **DEATH** or serious injury can occur if ingested.
- A swallowed button cell or coin battery can cause **Internal Chemical Burns** in as little as **2 hours**.
- **KEEP** new and used batteries **OUT OF REACH OF CHILDREN**
- **Seek immediate medical attention** if a battery is suspected to be swallowed or inserted inside any part of the body.



© 2023-2025 TransCore, LP. All rights reserved. TRANSCORE is a registered trademark protected by U.S. and International copyright laws. All other trademarks listed are the property of their respective owners.

16-0174-002 Rev B 3/2025

For more information:

Sales Support

800.923.4824

Technical Support

505.856.8007

[transcore.com](https://www.transcore.com)

TRANSCORE
Trusted Transportation Solutions