

NP2

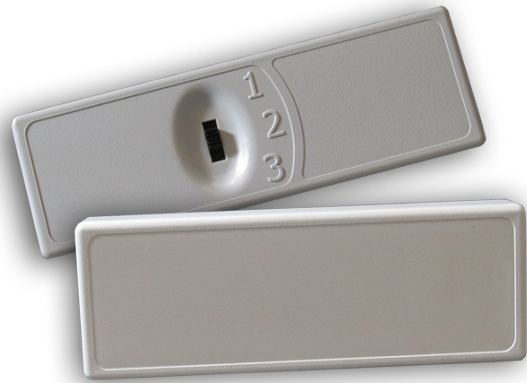
Multiprotocol RFID Tag

TransCore's NP2 products are multiprotocol 915MHz RFID tags with integrated connectivity technology for easy user configuration. They are ideal for high-speed, high-reliability applications.

The NP2 tags are designed for mounting to a vehicle's interior windshield, and are easily installed and removed when using one of the available mounting options.

The NP2 Multiprotocol Tag supports IAG/TDM, Super eGo® (SeGo), and ISO/IEC 18000-63 (6C) protocols.

NP2 tags are constructed of highly durable, impact resistant, molded plastic. The tags come with a choice of four mounting options: 3M™ Dual Lock™, hook-and-loop, double sided tape, or suction cups. Other customizable options include printing on the case, molded insert on the front of the case, laser-etching, and a physical switch.



Features

- ▶ Supports IAG/TDM, Super eGo® (SeGo), and ISO/IEC 18000-63 (6C) protocols
- ▶ Highly customizable to implement unique agency applications and features
- ▶ Impact resistant, molded plastic case
- ▶ Mounting options for interior windshield with Dual Lock, hook-and-loop, double sided tape, or suction cups
- ▶ Custom printing available on front and back of case

Applications

- ▶ Electronic toll collection
- ▶ Airport/ground transportation management
- ▶ Traffic management
- ▶ High Occupancy Toll

NP2

COMMUNICATIONS

Frequency Range

902-928MHz

Read Range

Read range is determined by reader and application.

Polarization

Linear, horizontal

SOFTWARE FEATURES

Data Memory

Compliant with California 6C Toll Operators' Committee Standard

SeGo and eGo: 2048 bits

IAG-TDM: 256 bits

PHYSICAL

Dimensions

Dual Lock, hook-and-loop, double-sided tape: 4.3 x 1.4 x 0.9 in (11.05 x 3.61 x 2.16 cm)

Suction cups: 4.3 x 1.4 x 1.1 in (11.05 x 3.61 x 2.85 cm)

Weight

3.5 oz (99.2 g)

Case

The plastic case is UV stable. Operation is not affected by temperature extremes or severe conditions typical of a vehicle windshield environment.

Mounting Surface

Interior non-metallic windshield

Mounting Method

Attached by Dual Lock, hook-and-loop, double sided tape, or suction cups

Battery Life

Non-switchable: 10 years

Switchable: 7.5 years

ENVIRONMENTAL

Operating Temperature

-40°F to +185°F (-40°C to +85°C)

Storage Temperature

-40°F to +185°F (-40°C to +85°C)

Humidity

95% Relative Humidity

Thermal Shock

-40°F to +185°F (-40°C to +85°C), 30 minutes per cycle, $\pm 30^\circ$ per minute rate, 100 cycles

Vibration

Sinusoidal: 10 G peak, 10 to 500 Hz, logarithmic sweep, 30 minutes per sweep, 3 hours per axis (X, Y, and Z)

Random: 1.5 G_{rms} , 15 to 1000 Hz, 12 hours per axis (X, Y, and Z)

Shock

30 G peak, 10-ms duration, 1/2 sine pulse, 3 axes, 6 shocks per axis

REGULATORY

FCC Part 90 and Part 15

FCC: FIH051045

Industry Canada RSS137

IC:1584A-051045

STANDARDS

Compatibility

ISO/IEC 18000-63 (6C)

SeGo and eGo: ANSI NCITS 256-2001

Part 4.2 and ISO 18000-6B standards

IAG-TDM

LABELING

Tag case is custom printed with all required ID information. Barcode labels are affixed at the factory.



Attaches to interior windshield with Dual Lock, hook-and-loop, double sided tape, or suction cups

⚠ WARNING

- **INGESTION HAZARD:** This product contains a button cell or coin battery.
- **DEATH** or serious injury can occur if ingested.
- A swallowed button cell or coin battery can cause **Internal Chemical Burns** in as little as **2 hours**.
- **KEEP** new and used batteries **OUT OF REACH of CHILDREN**
- **Seek immediate medical attention** if a battery is suspected to be swallowed or inserted inside any part of the body.



© 2020-2025 TransCore, LP. All rights reserved. TRANSCORE is a registered trademark protected by U.S. and International copyright laws. All other trademarks listed are the property of their respective owners.

16-0117-003 Rev C 10/25

For more information:

Sales Support

800.923.4824

Technical Support

505.856.8007

[transcore.com](https://www.transcore.com)



TRANSCORE
Trusted Transportation Solutions